

Should businesses understand and shape their wider water risks and impacts?

Julien Harou

August 2018 WWW, Stockholm

A role for business in river basins?

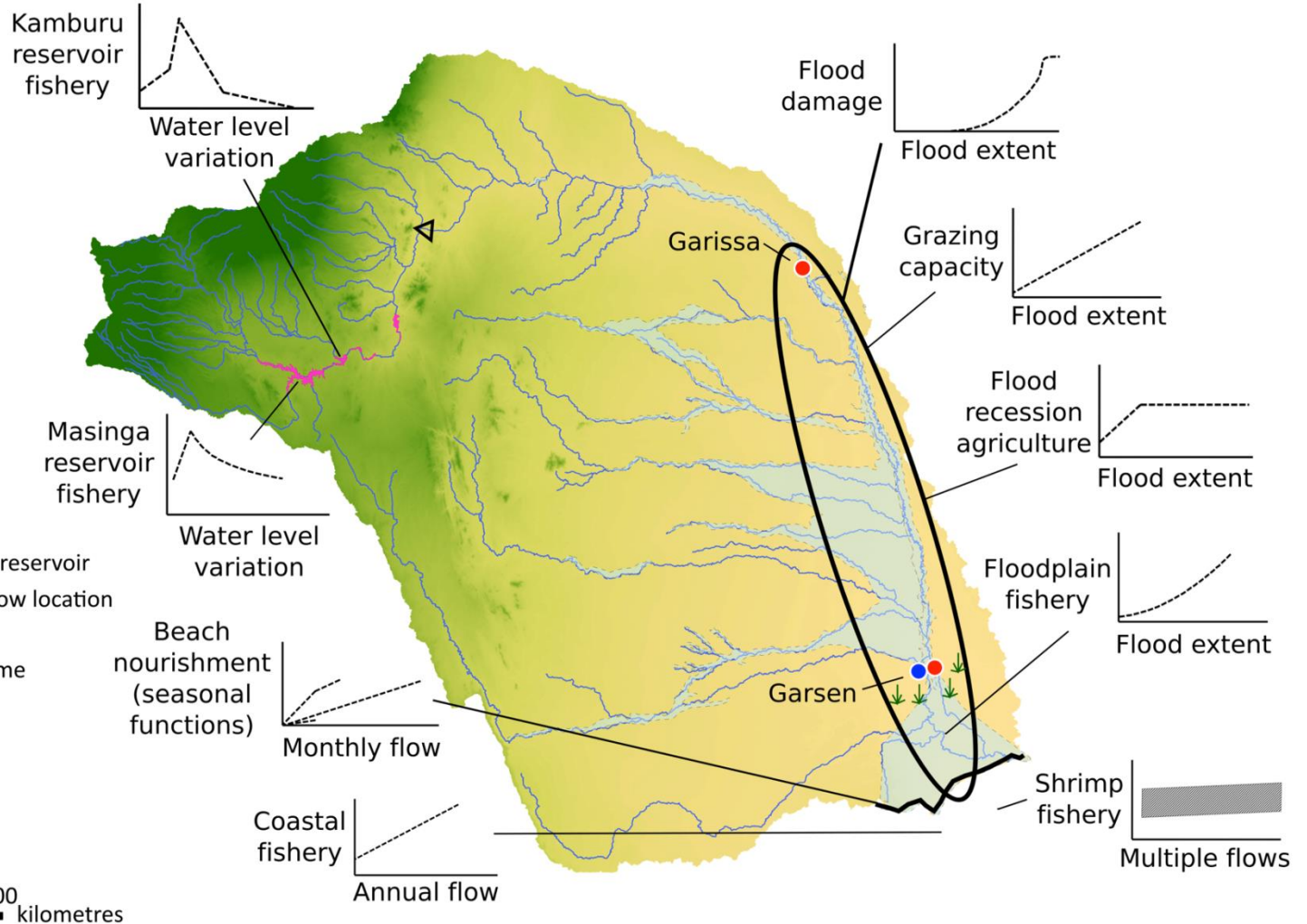
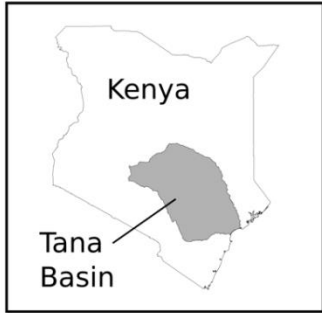
- Passive? (risky, costly)
- Capture? (costly, risky)

A role for business in river basins?

- Passive? (risky, costly)
- Capture? (costly, risky)
- Stewardship: Participative co-development
(cost-effective, risk reduction)



Water & ecosystem benefits accounting



Legend

- Floodplains
- Hydropower reservoirs
- River network
- Proposed multi-purpose reservoir
- Environmental reserve flow location
- Flow alteration location
- Proposed irrigation scheme

Elevation (mASL)



Online interactive river basin models



Network Kenya - Hydraplatform - Mozilla Firefox

test.hydra.org.uk/network/6

My Projects About How To English

Kenya

Scenarios: Baseline

Runs: Export, ru...

Nodes: [Icons for various node types]

Links: [Link icon]

Tools: Highlight Using: [Dropdown], Quick View Attributes: [Dropdown]

Resource: No Network Element Selected.

Map View List View Input/Output Viewer

Search for... Run a Model

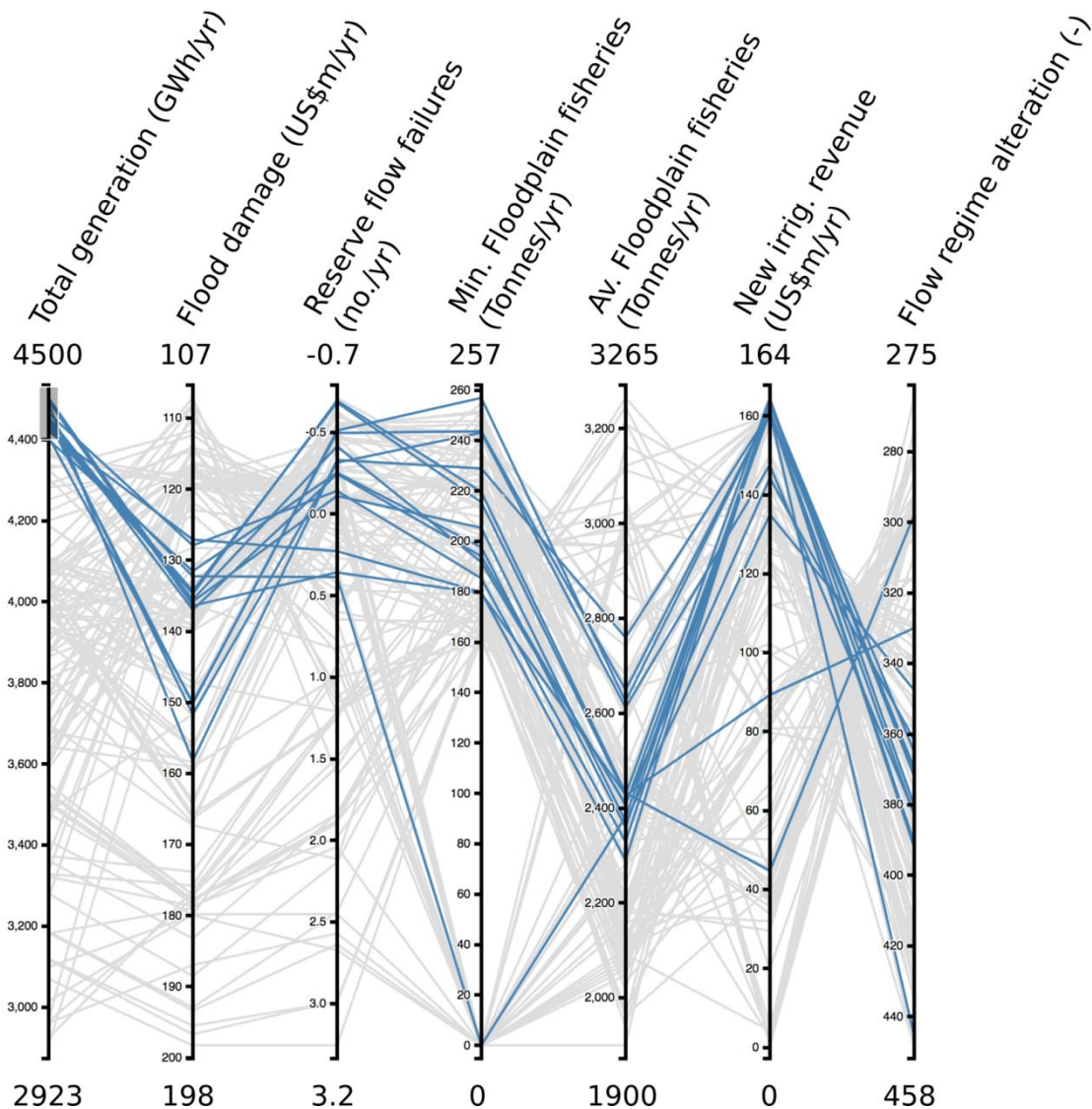
Display labels Link direction

Map showing a network of nodes (circles and triangles) and links (thick black lines) overlaid on a map of Kenya. The network is primarily located in the central and eastern parts of the country, connecting various regions like Meru, Nyandarua, and Machakos. National parks such as Mount Kenya, Tsavo West, and Tsavo East are also visible.

Copyright © HydraPlatform 2016

Flask

Interactive trade-off analysis



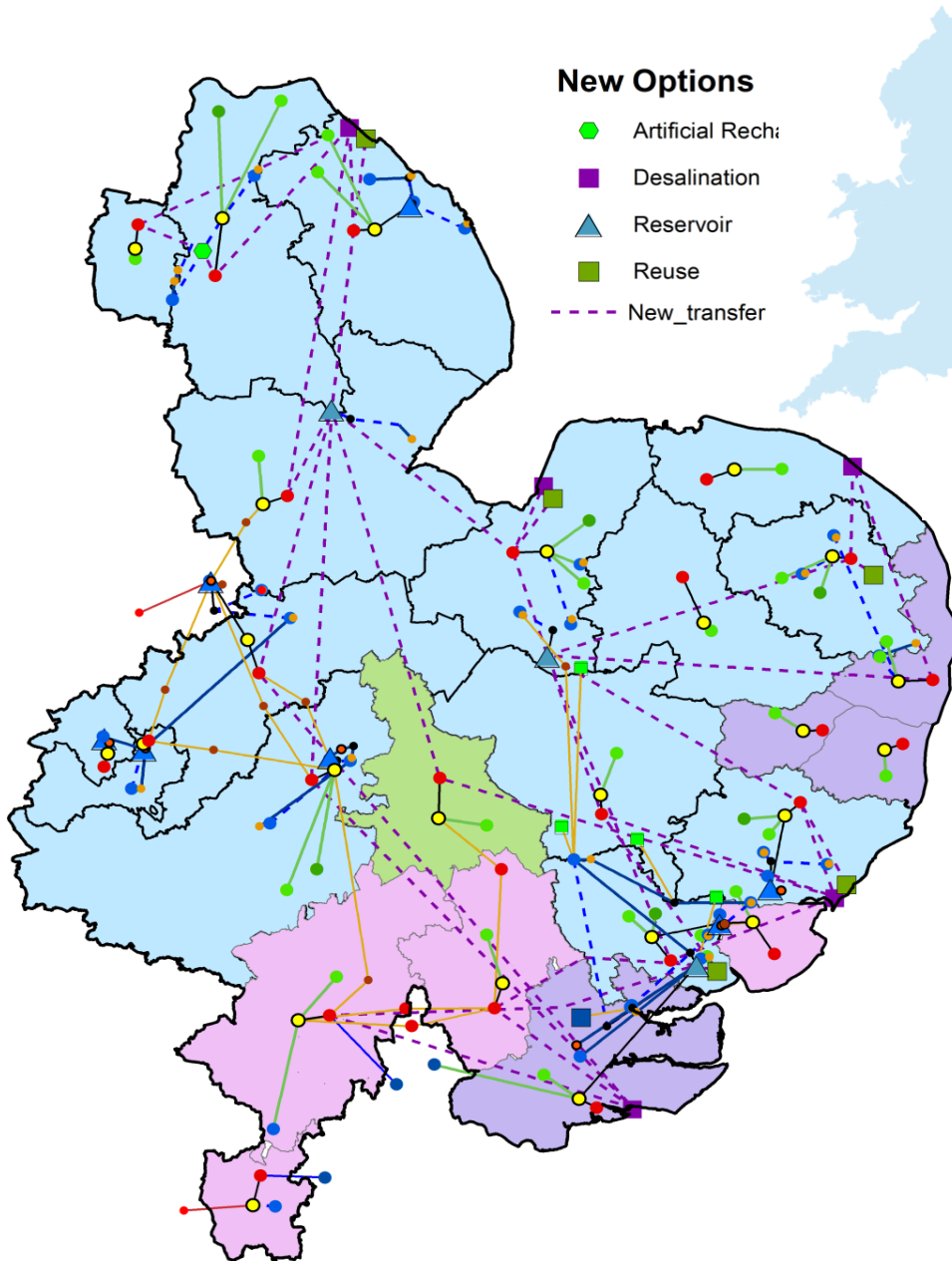
The future:

Co-design of river basin interventions and private water development

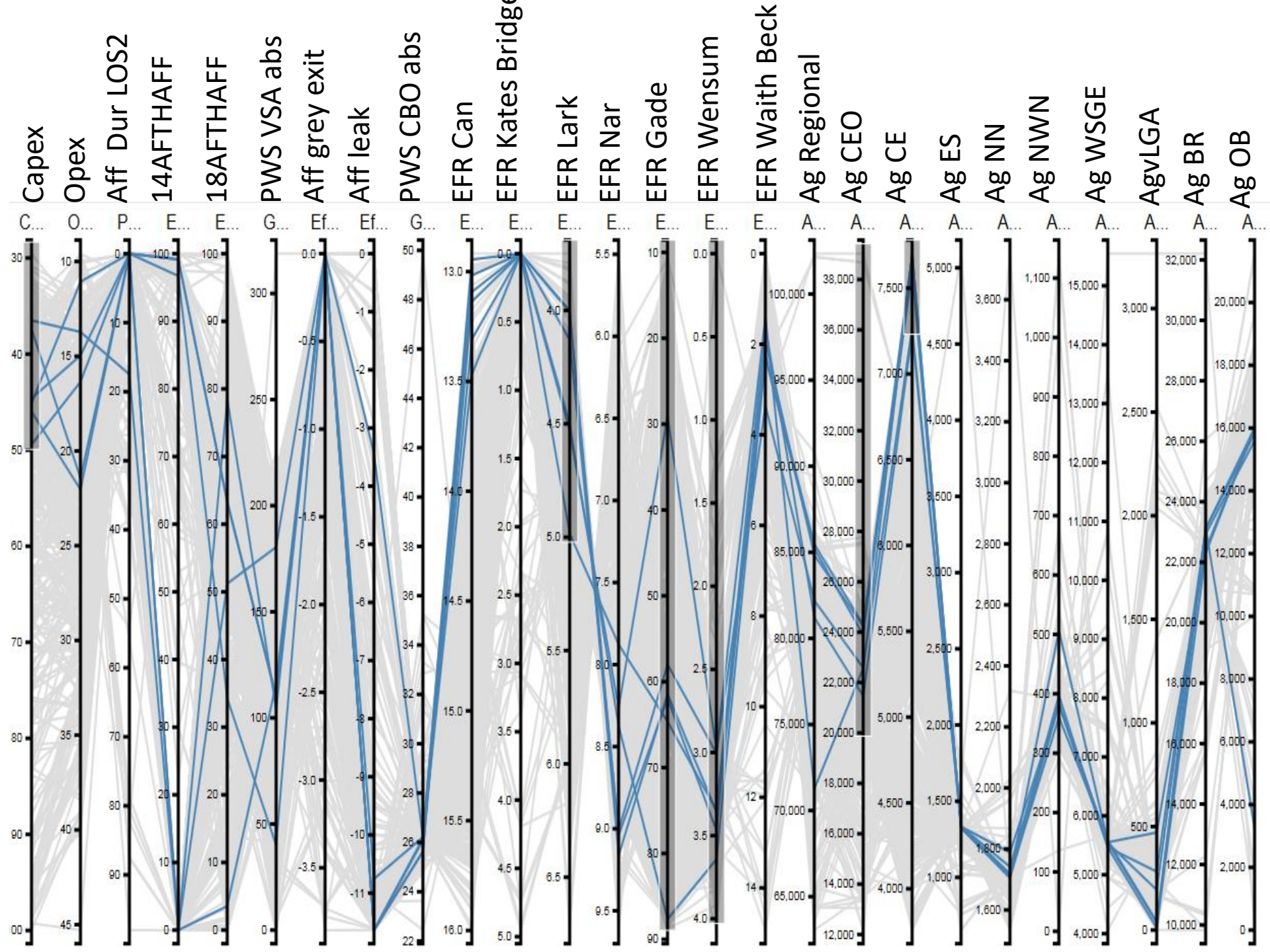
2 case-studies:

- large regional system (UK)
- complex ecosystem assets (Rep. Congo)

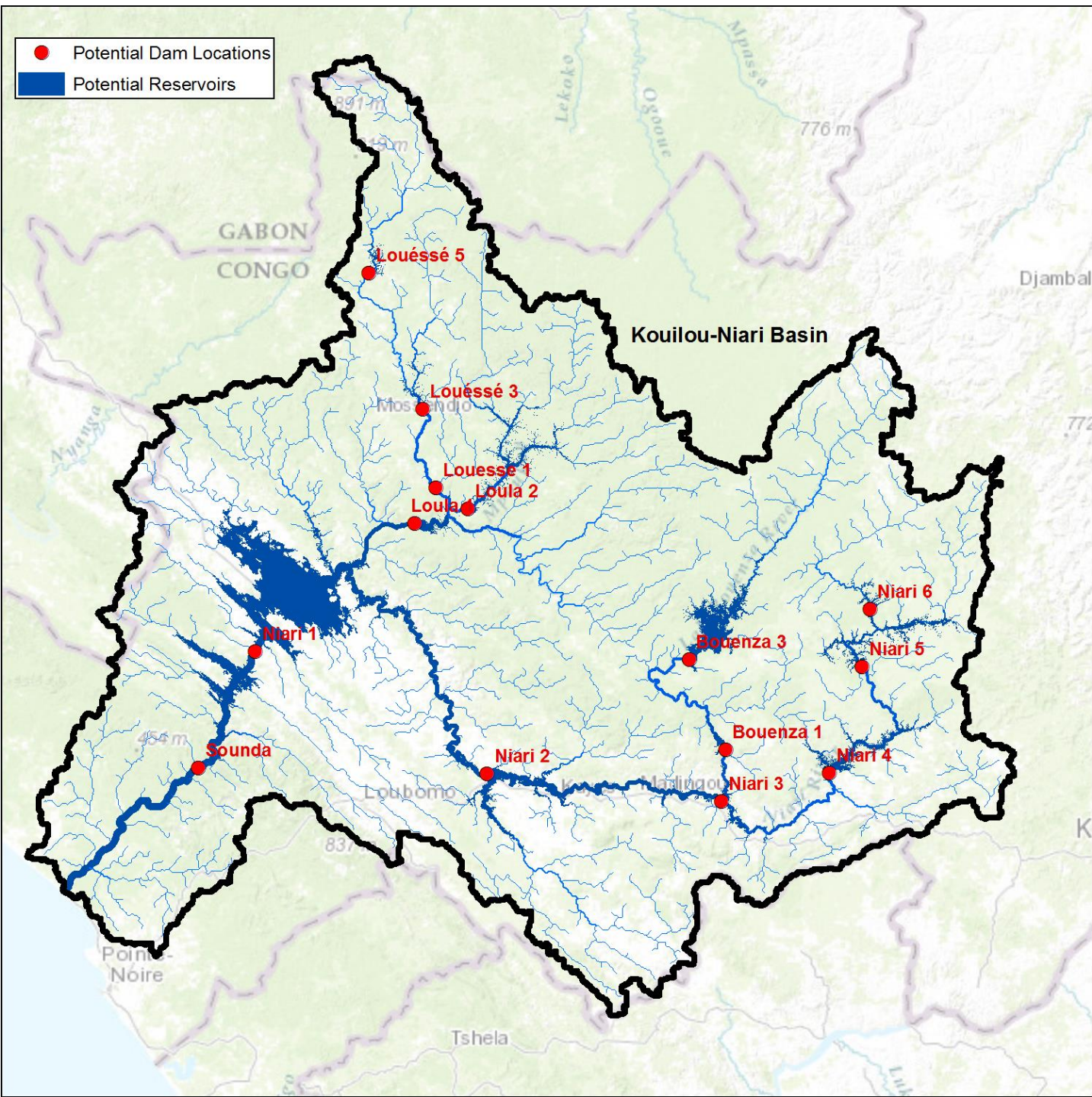
East England water utilities



- Large regional system with (4 utilities serving 9.4 million customers, active Agri, environment sectors)
- Challenges: climate change, growth
- Utilities considering infrastructure expansion, demand management, and increased interconnectivity

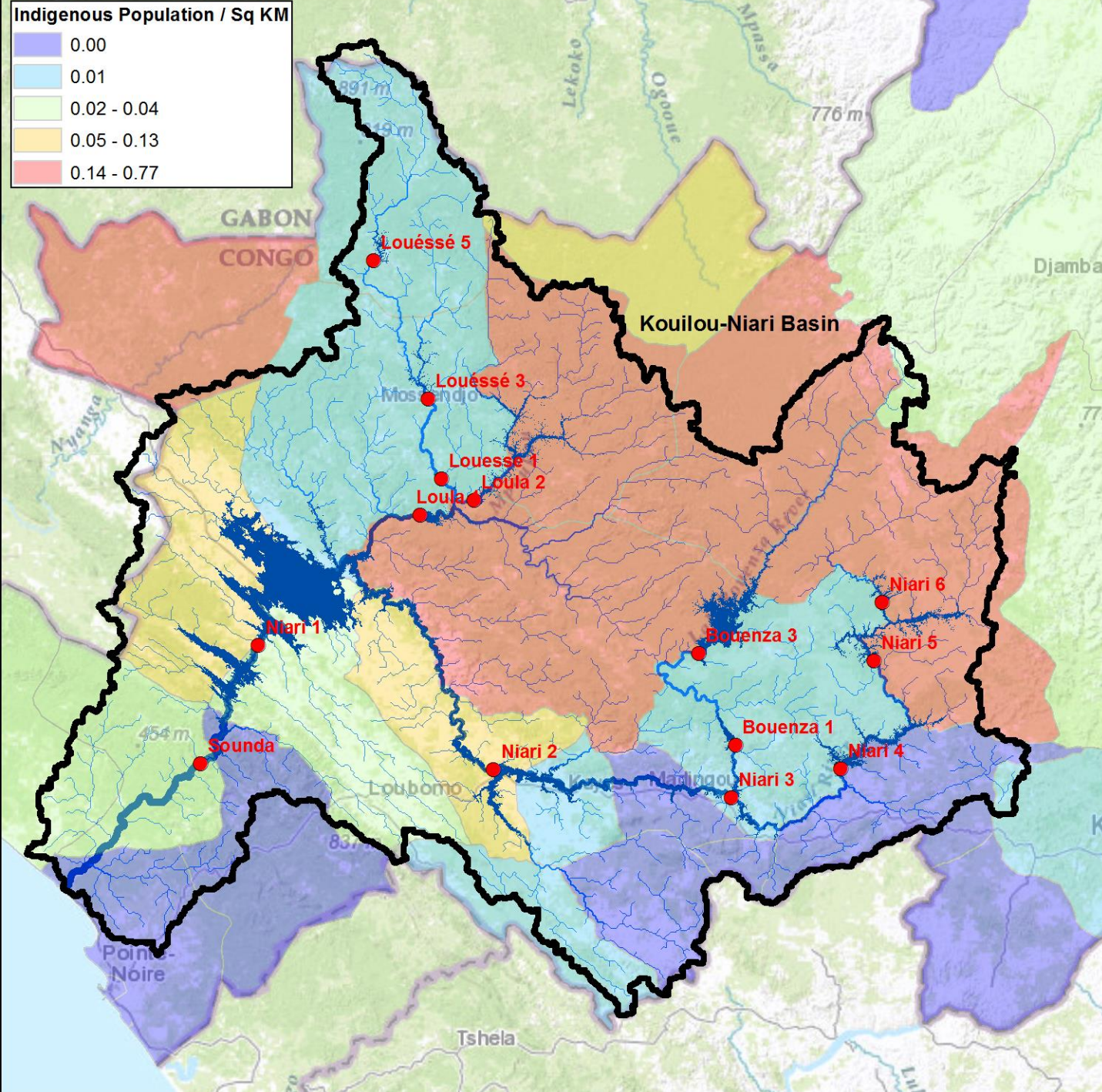
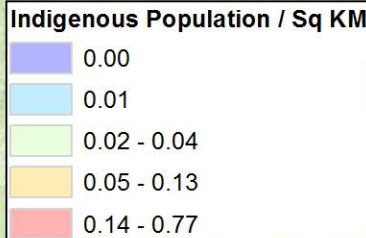


New reservoirs in Congo?

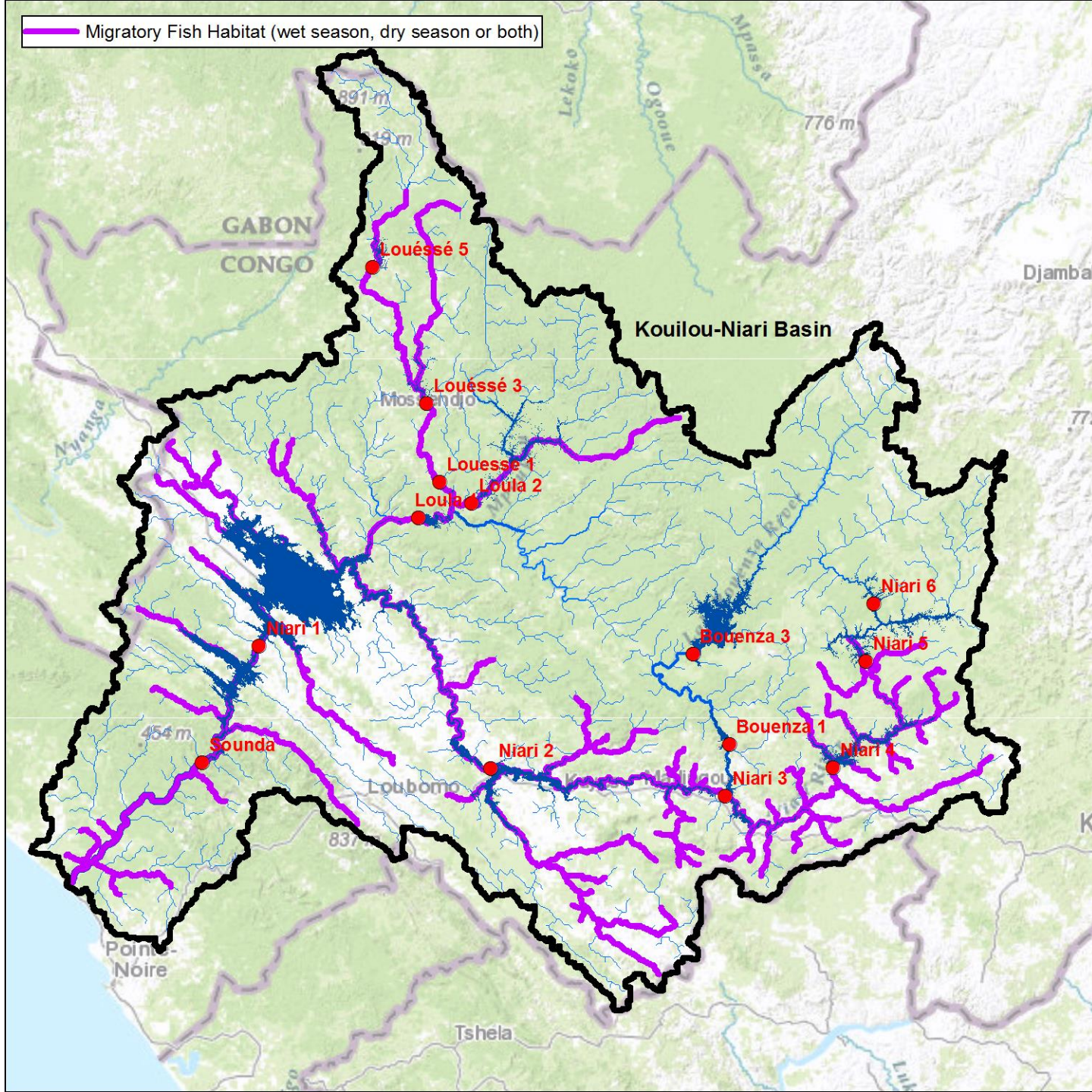


Work done for the IFC in collaboration with TNC, ERM, Motts et al.

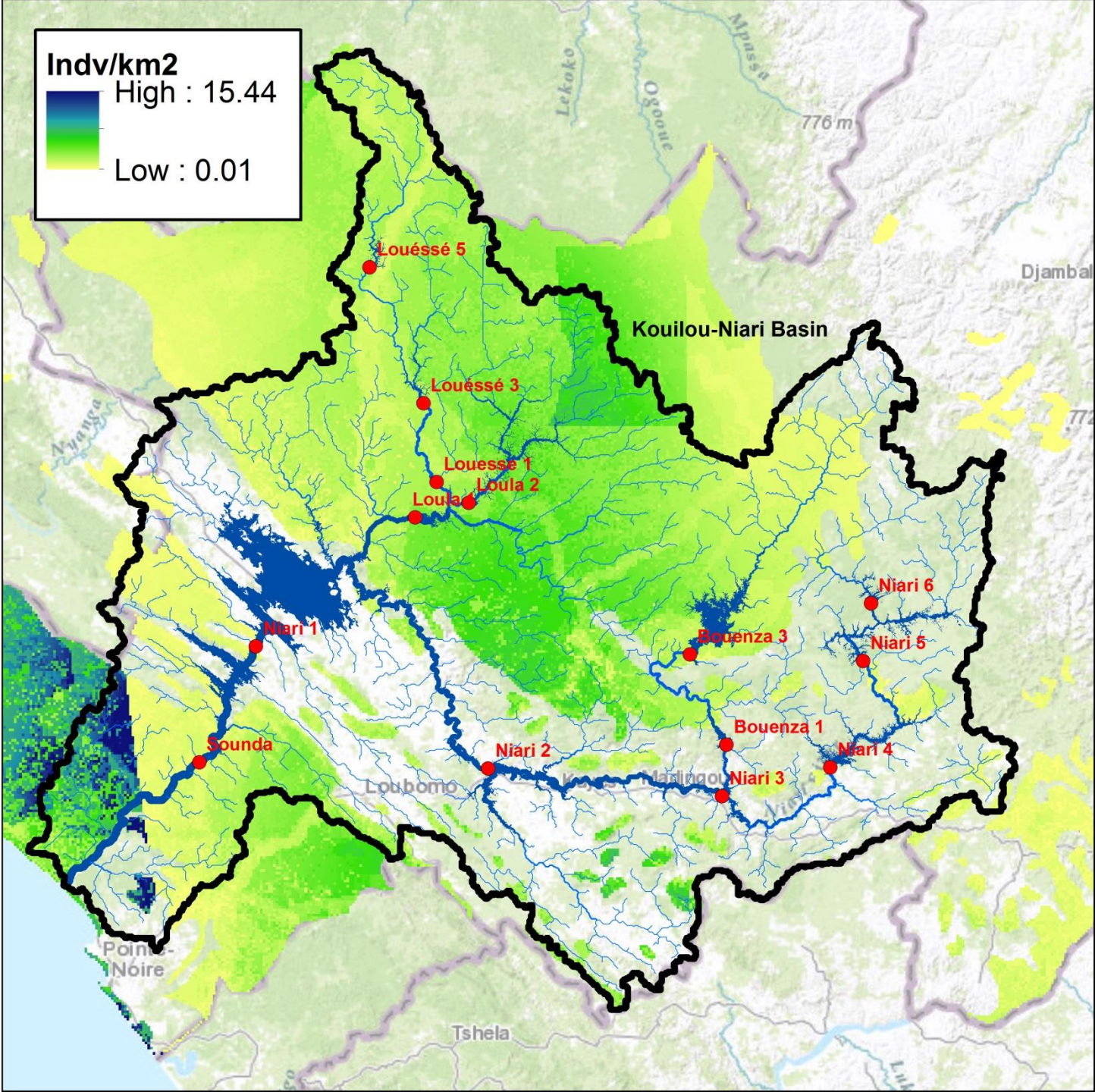
Indigenous populations



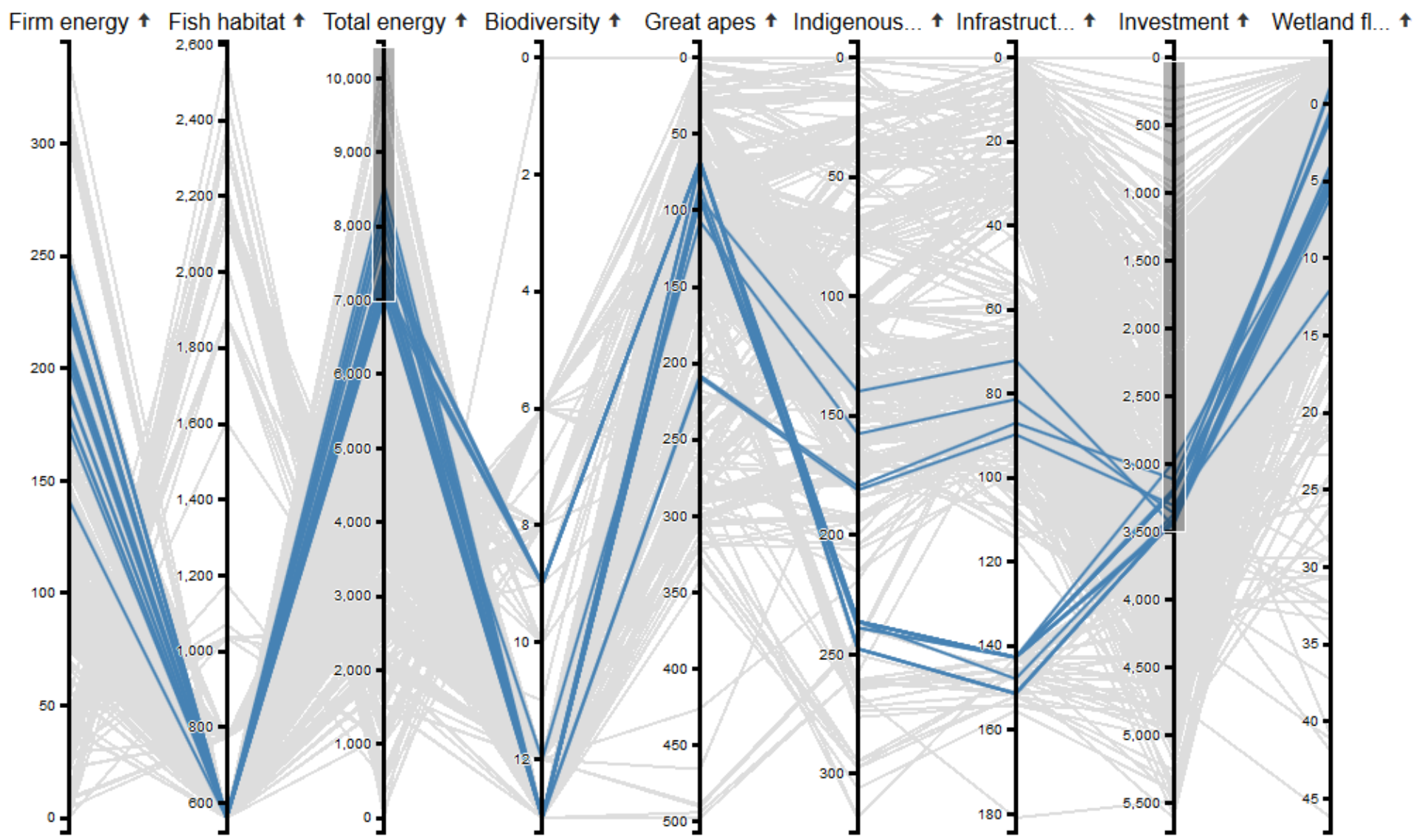
Rivers with migratory fish



Ape habitat



Interactive trade-off analysis



Cost effective, efficient & inclusive participative approaches and tools enable water stewardship to scale

- Collaborative planning and decision-making of river basin development must become quick and cost-effective for stewardship to scale
- Water stewardship means businesses understand their risks and impacts on current and future river basins